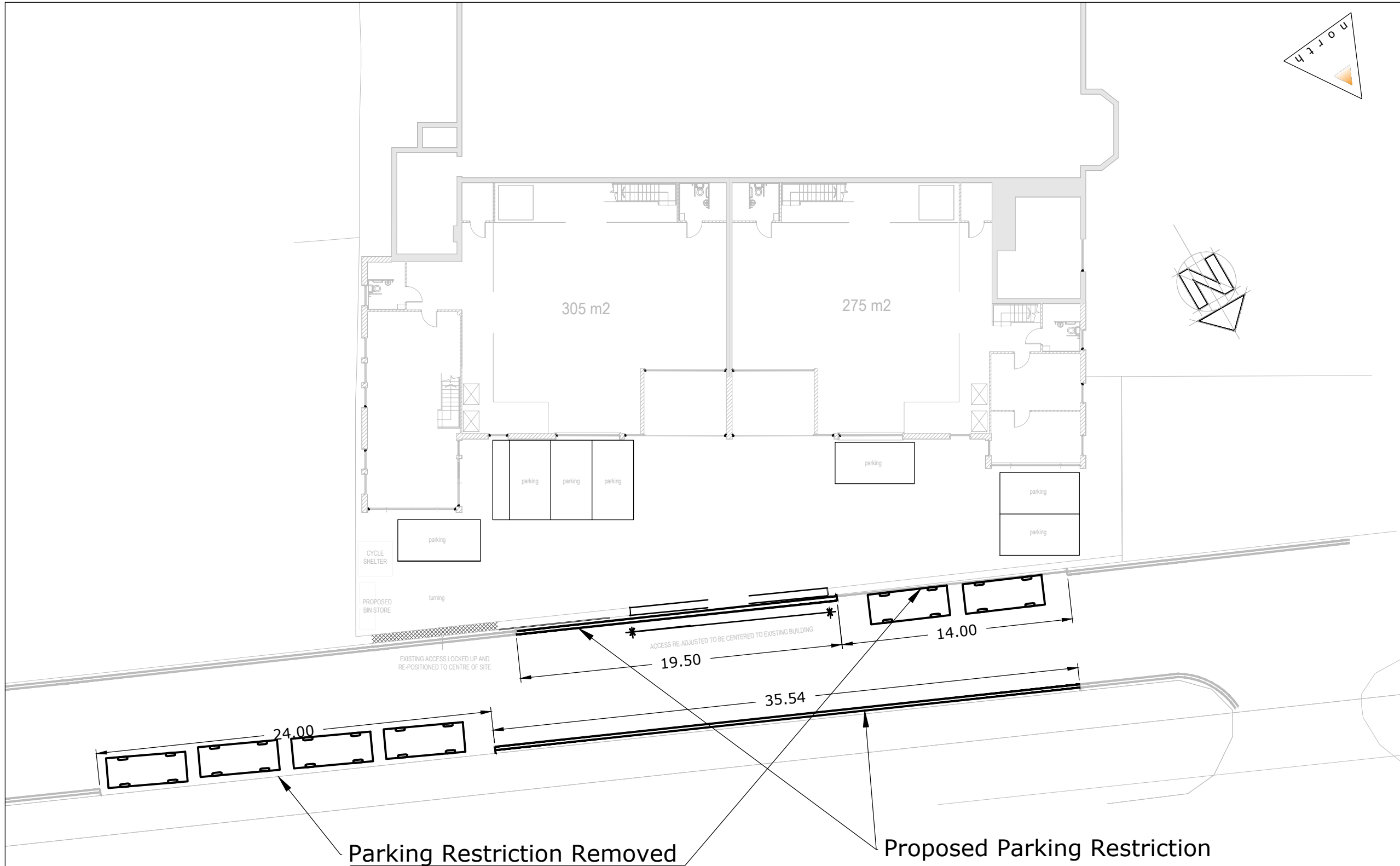


C:\Users\andrewnack\Motion\StaffSite - Cbread 2211031\Drawings\2211031 - 04D Proposed Parking Restrictions.dwg



Rev:	Description:	Date:	Rev By:	Chk'd:
<h2>Notes:</h2> <p>Parking Restriction to be moved west to accommodate new access. Area of on street parking to be reduced from 48.25m to 38m. 7 internal parking spaces are provided resulting in a net gain of 6 car parking spaces.</p>				
 <p>9 Greyfriars, Reading, Berkshire, RG1 1NU T: 0118 206 2930 Guildford - London - Reading www.motion.co.uk</p>				
Project: Deacon Way, RG30 6AZ				
Title: Proposed Parking Restrictions				
Client: Craftsman Brothers Ltd.				
Drawing Status:				
Scale: 1:250 (@ A3) Date: 23/05/2023				
Drawn: AN Checked: CM Approved: CM				
Drawing: 2211031 - 04 Revision: D				